

Introduction to Visible Body



Wolters Kluwer
Health

3D Human Anatomy
and Physiology for
I Pad, I Phone,
Android, Mac and PC

Visible Body Products

Two categories: Anatomy tools and Anatomy and Physiology

Anatomy

Human Anatomy Atlas - PC, Mac, I Pad, I Phone, Android, Windows touch

Skeleton Premium - PC, Mac, I Pad, I Phone

Muscle Premium - PC, Mac, I Pad, I Phone

Heart and Circulatory Premium - PC, Mac, I Pad

Brain and Nervous System - I Pad

Respiratory System - I Pad

Reproductive and Urinary - I Pad

Digestive System - I Pad

Anatomy and Physiology

Anatomy and Physiology - PC, Mac, I Pad, I Phone, Android, Windows touch

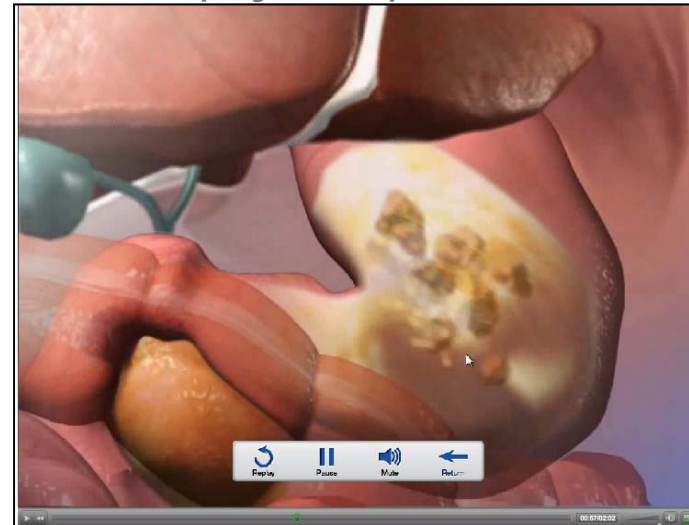
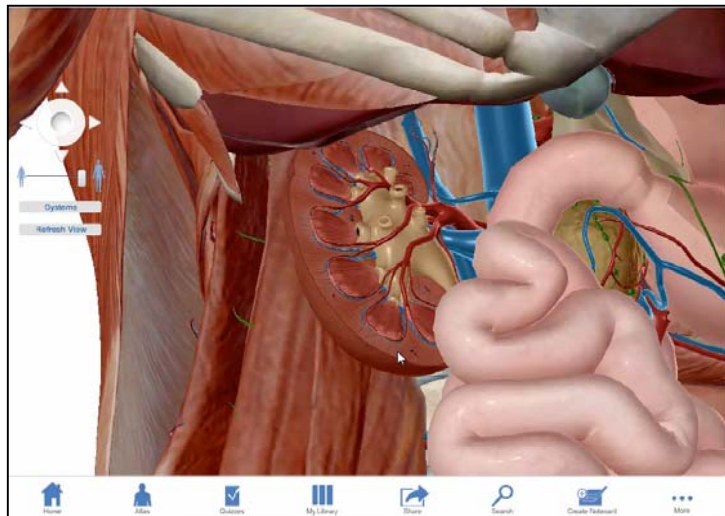
Anatomy and Function - PC, Mac, I Pad

Physiology Animations - PC, Mac, I Pad

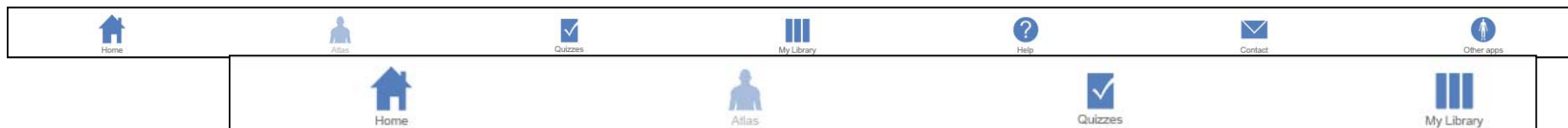
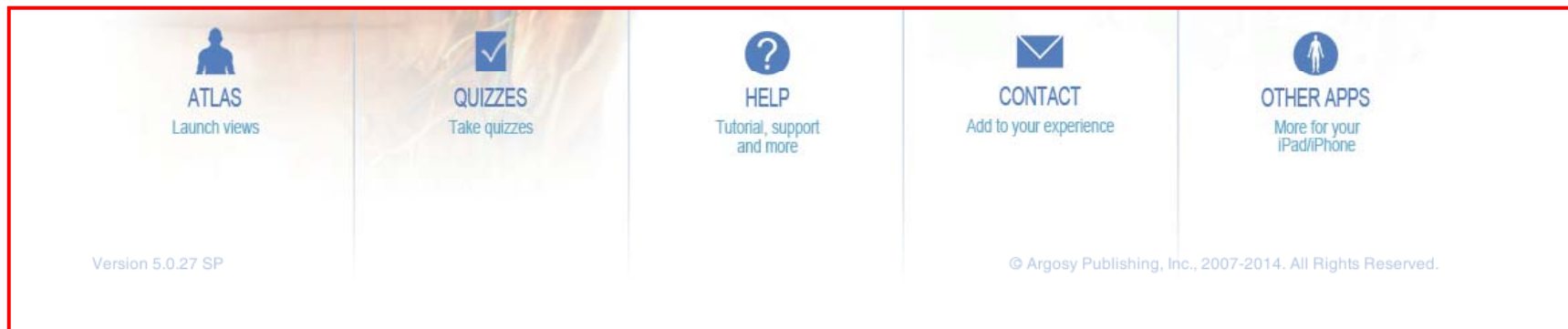
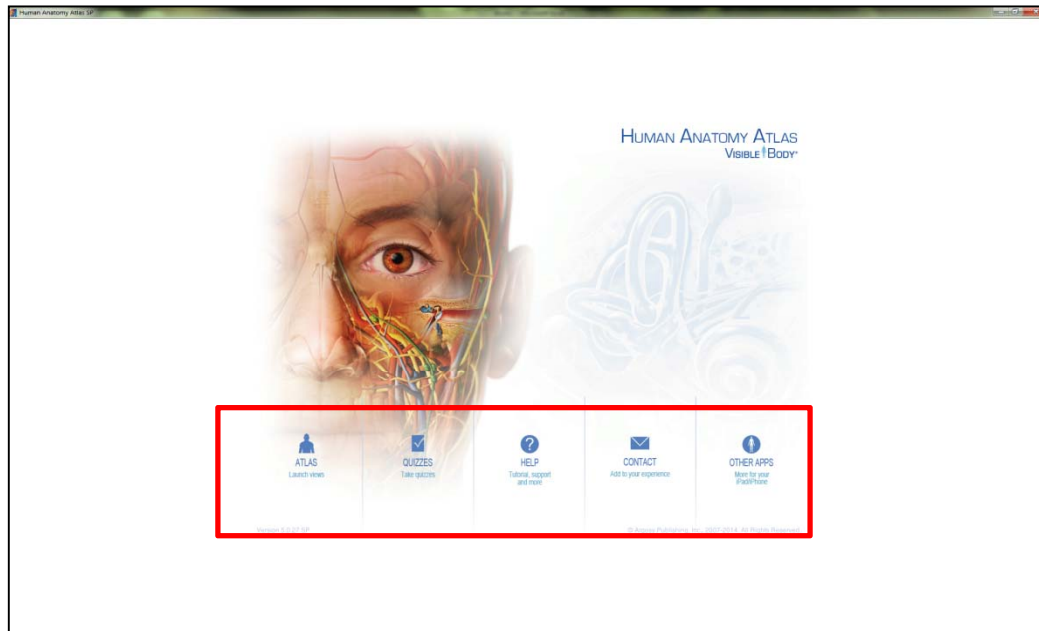
Product Features

What to expect in Visible Body

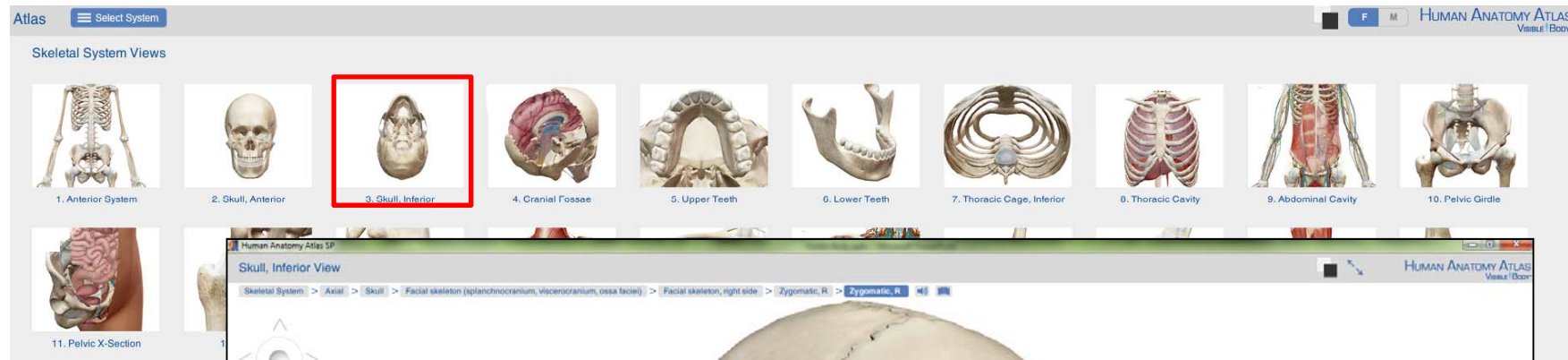
- *Search or browse to select a topic*
- *Rotate, zoom and view models from any angle, or view cross sections*
- *Highlight, Fade and Hide tissues and structures*
- *Click to reveal names (scientific and Latin) and definitions and a pronunciation guide*
- *Create and save your own views. Add labels and share with friends*
- *Test your knowledge with quizzes*
- *View animations and diagrams to understand physical processes*

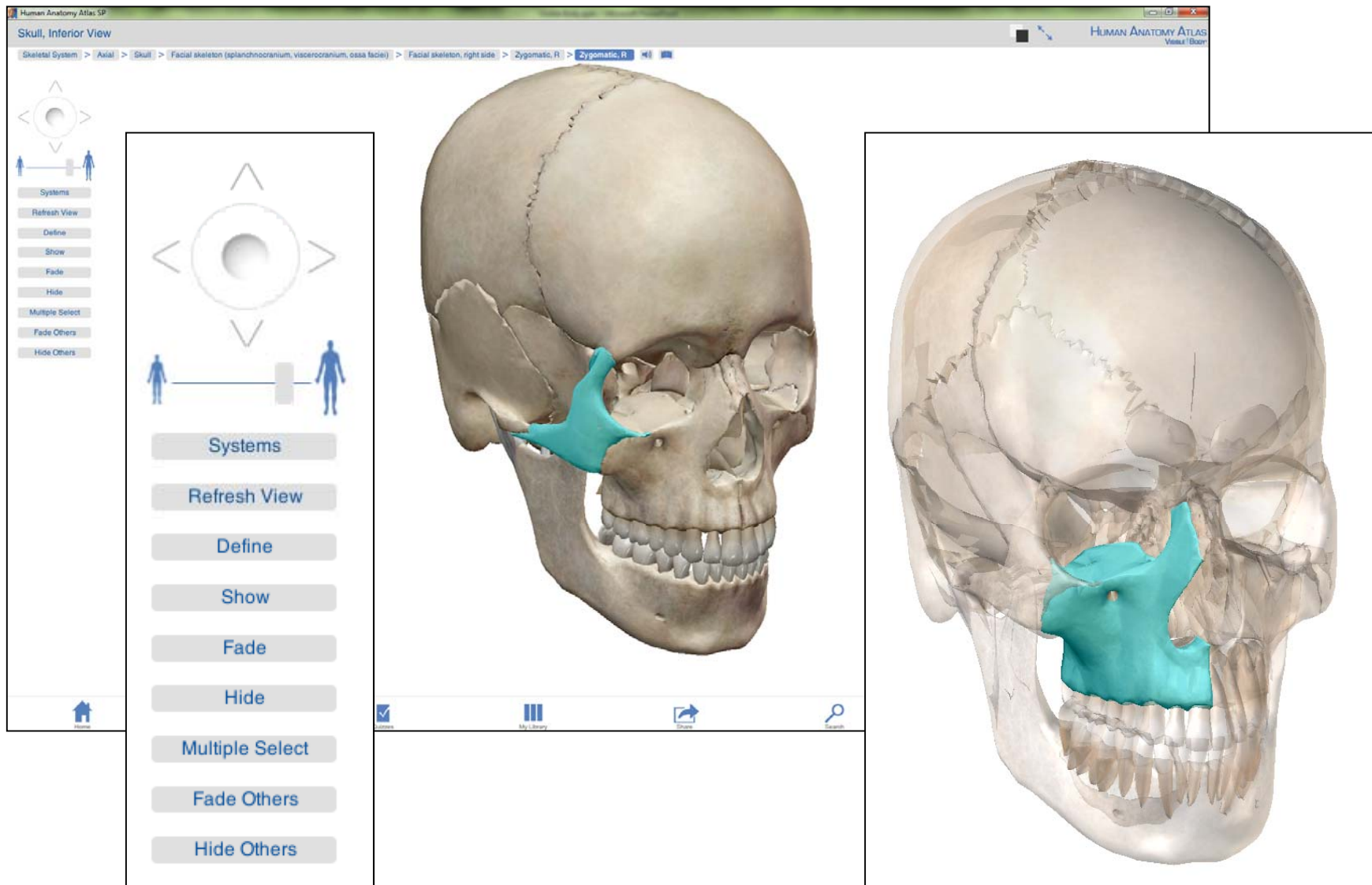


Home Page and Menus



System page

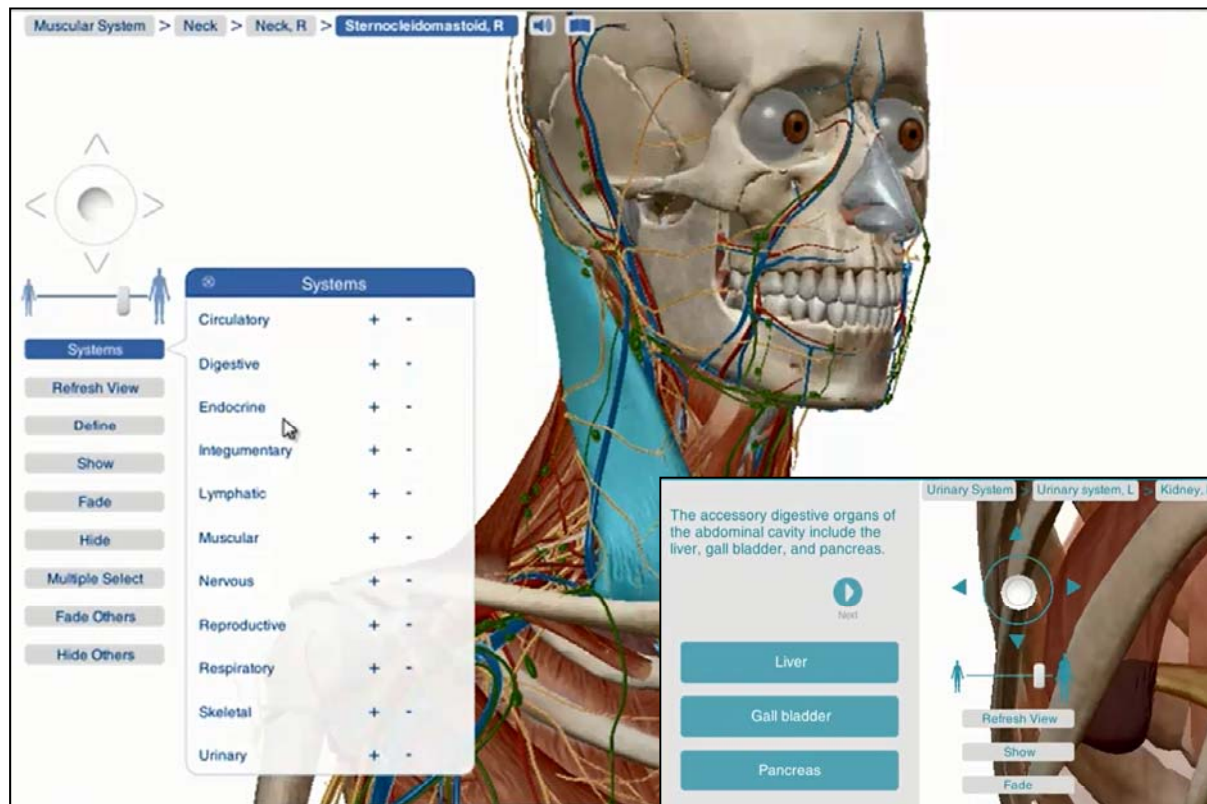




Maxilla, R

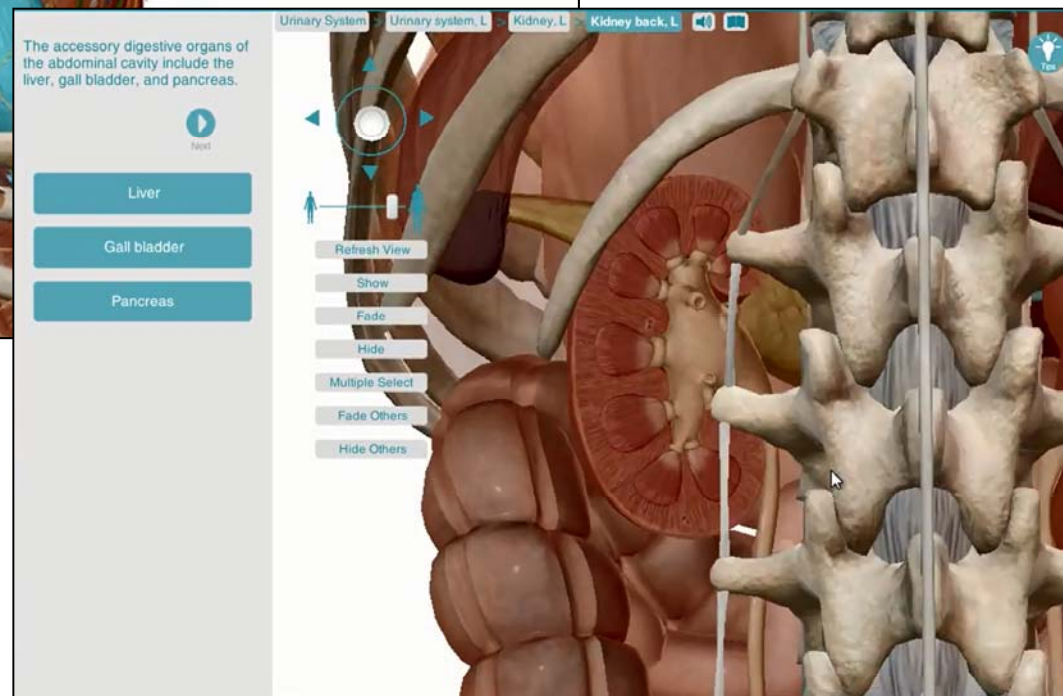
Maxilla

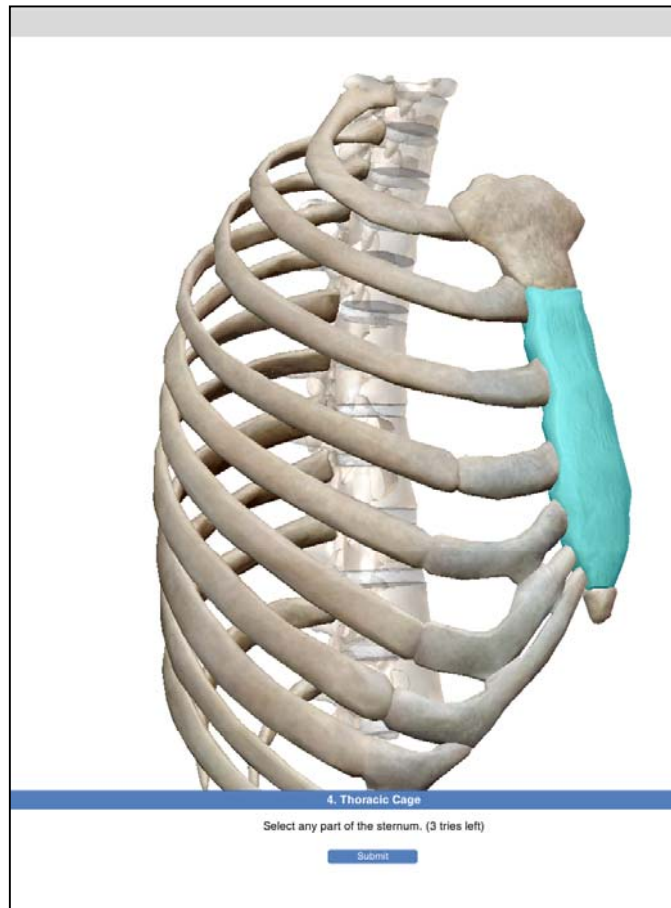
The maxilla (r, l) are two of the fourteen facial bones. The facial bones articulate with the bones of the cranium (neurocranium) and together form the skull. The maxillae form the upper jaw and the boundaries of three cavities: the roof of the oral cavity, the floor and lateral wall of the nasal cavity, and the floors of the orbits. The triangular zygomatic process, found at the junction of the anterior, superior, and orbital surfaces, articulates with the zygomatic bone. The anterior surface is directed forward and laterally, with a series of inferior eminences corresponding to the positions of the roots of the teeth. Connecting the two rows of teeth anteriorly is the palatine process, a plate that forms part of the hard palate. The maxillary sinus, the largest of the paranasal sinuses, is a large, thin-walled, pyramid-shaped cavity within the body of the maxilla that stretches from the zygomatic process to the lateral wall of the nose.



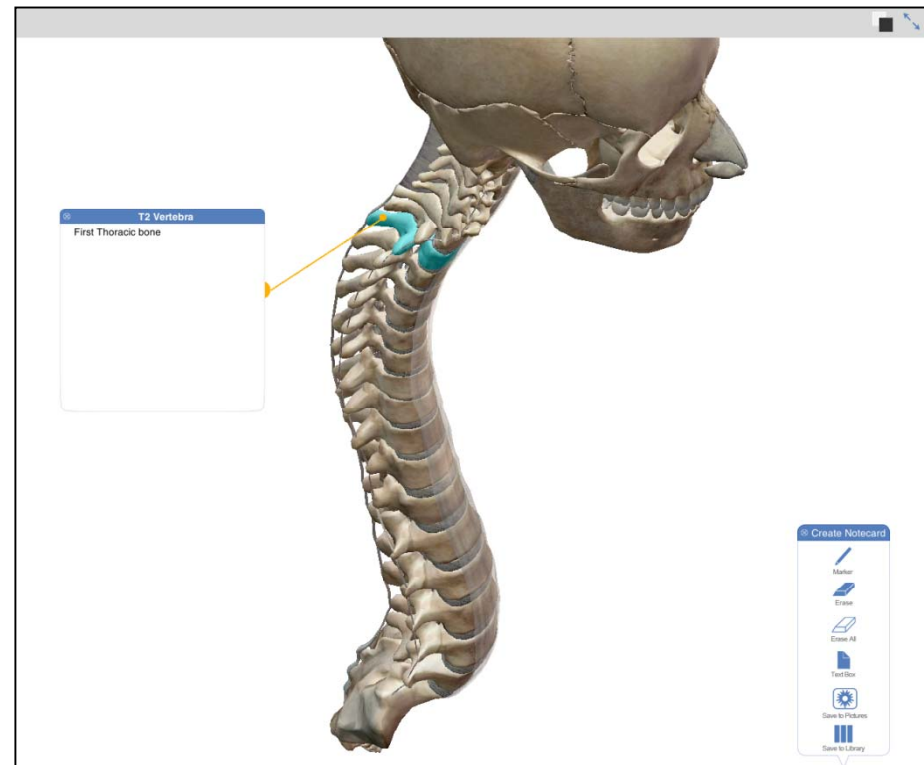
Hide or Fade

Systems Menu





Quiz Questions



Label and Save



Search

ethmoid

Browse by Name

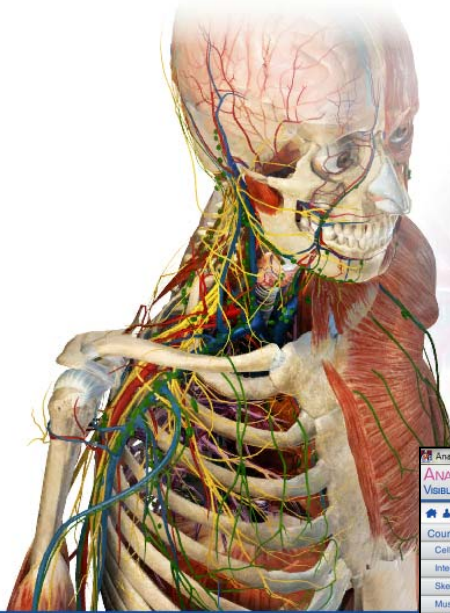
Search

Search Content

Abdomen	Add Go To	A
Abdomen	Add Go To	B
Abdomen	Add Go To	C
Abdomen	Add Go To	D
Abdomen	Add Go To	E
Abdomen, L	Add Go To	F
Abdomen, left side	Add Go To	G
Abdomen, R	Add Go To	H
Abdomen, right side	Add Go To	I
Abdominals, L	Add Go To	J
Abdominals, R	Add Go To	K
Abductor digiti minimi (foot), L	Add Go To	L
Abductor digiti minimi (foot), R	Add Go To	M
Abductor digiti minimi (hand), L	Add Go To	N
Abductor digiti minimi (hand), R	Add Go To	O
Abductor hallucis, L	Add Go To	P
		Q
		R
		S
		T
		U
		V
		W
		X
		Y
		Z
		0

Browse by Name





ANATOMY & PHYSIOLOGY
VISIBLE BODY

Course Topics

- Cells and Tissue
- Integumentary System
- Skeletal System and Joints
- Muscle Tissue and Muscular System
- Nervous System and Special Senses
- Endocrine System
- Circulatory System
- Lymphatic System
- Respiratory System
- Digestive System
- Urinary System
- Reproductive System
- View Quiz Record
- My Notecards

34. Introduction

- Respiratory system overview
- Upper and lower respiratory structures
- Types of respiration

35. Upper Respiratory System

- Upper respiratory tract
- Respiratory defenses
- Olfactory structures and olfaction
- Function of the epiglottis
- Pharynx, larynx, and phonation

36. Lower Respiratory System

- Lower respiratory tract
- Trachea and bronchi
- Location and anatomy of lungs
- Anatomy of the alveoli
- Respiratory and circulatory structures in the lungs

37. Respiration

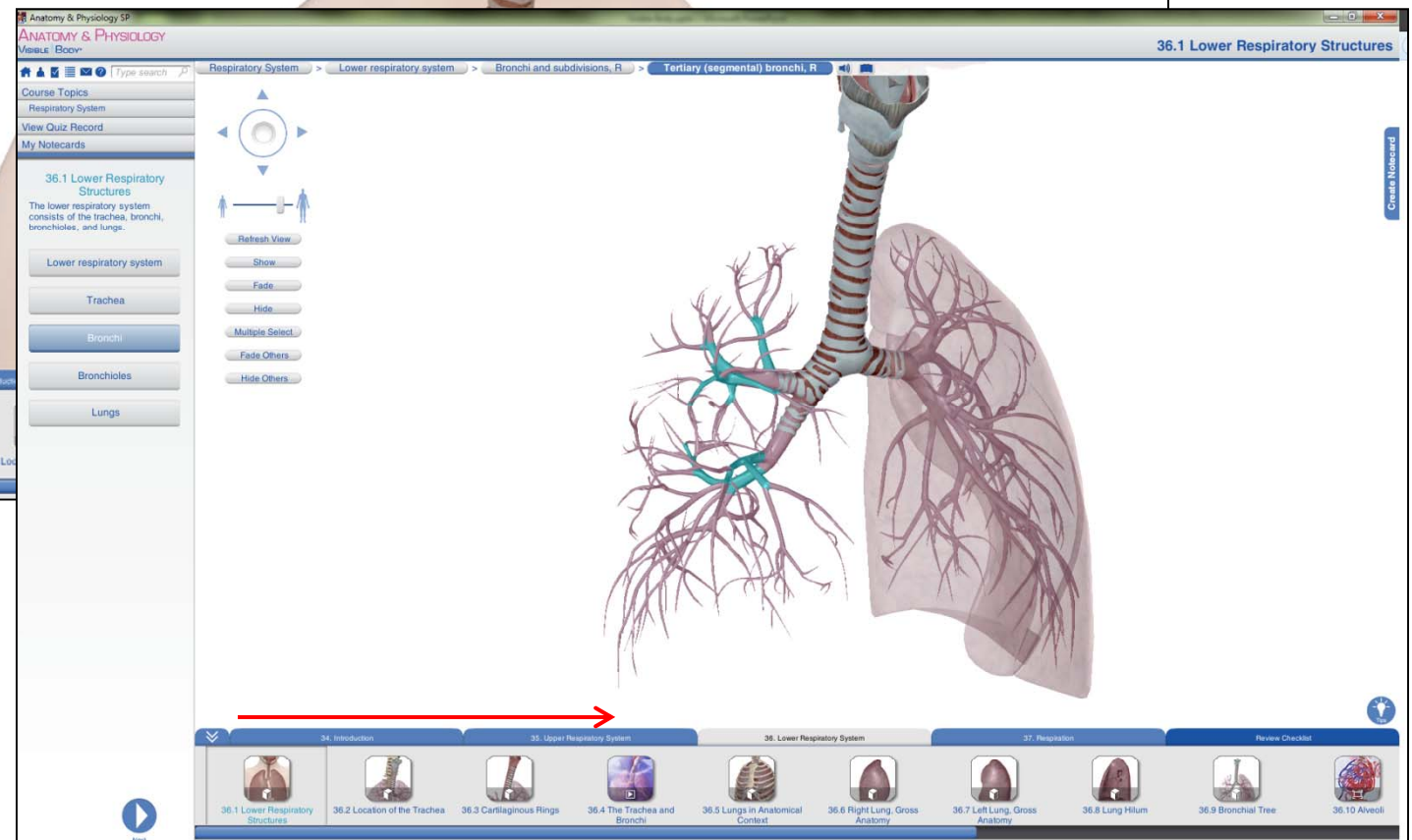
- Pulmonary ventilation and Boyle's law
- Muscles of inhalation and exhalation
- External respiration
- Dalton's law
- Internal respiration
- Respiratory rate

36.1 Lower Respiratory Structures

COURSE TOPICS
Visual and interactive guide

INDEX
Search index

START





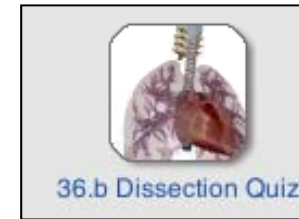
3D model



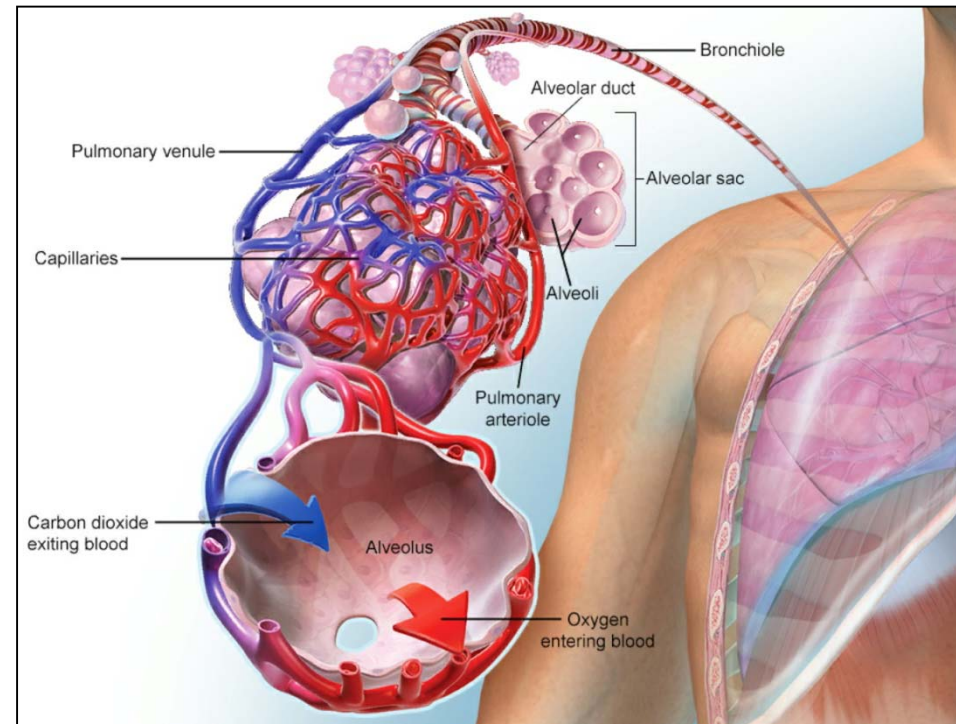
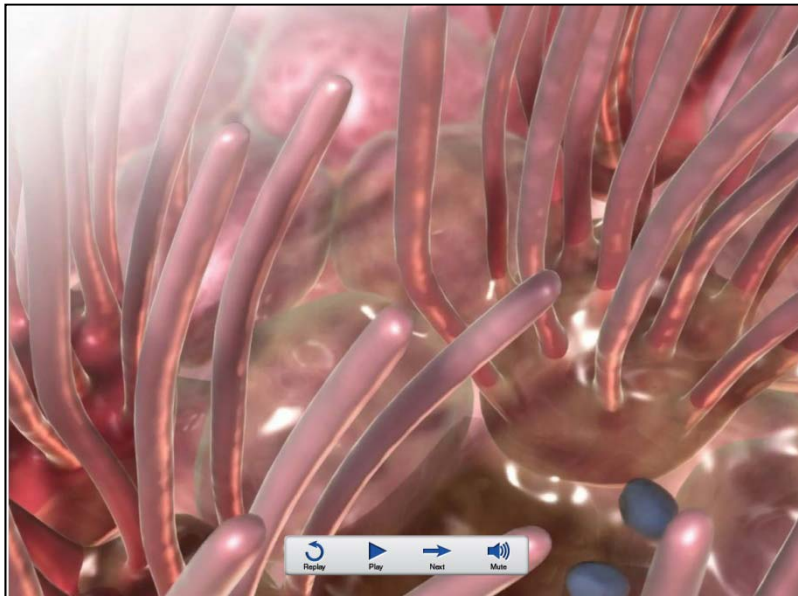
Video

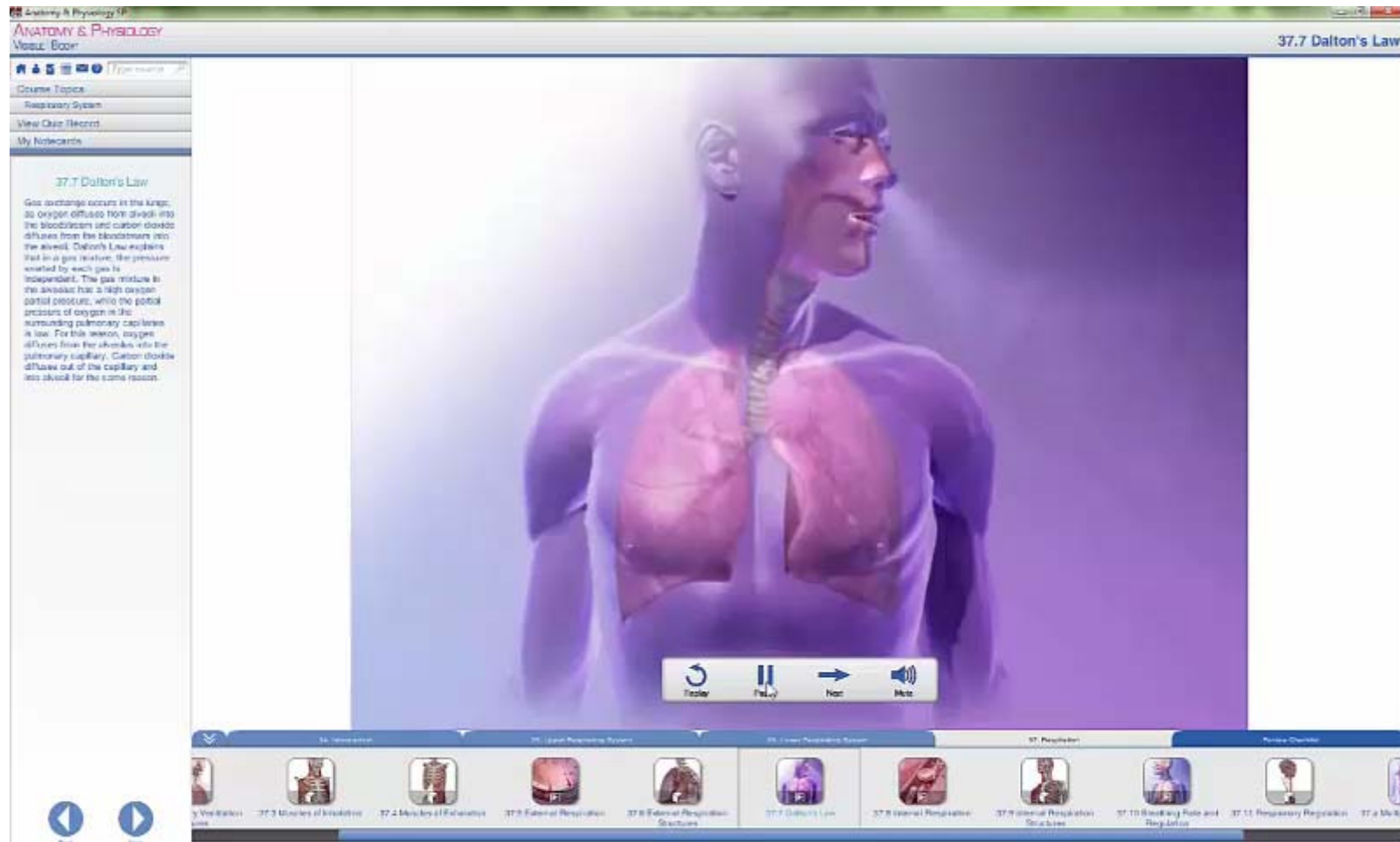


Diagram

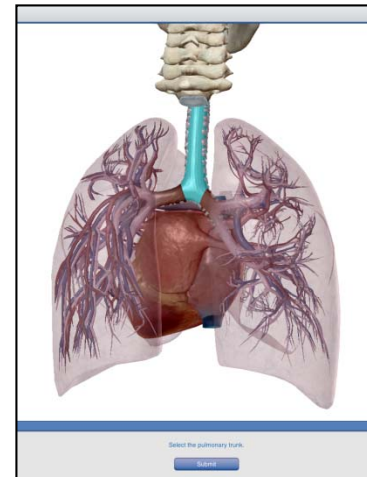
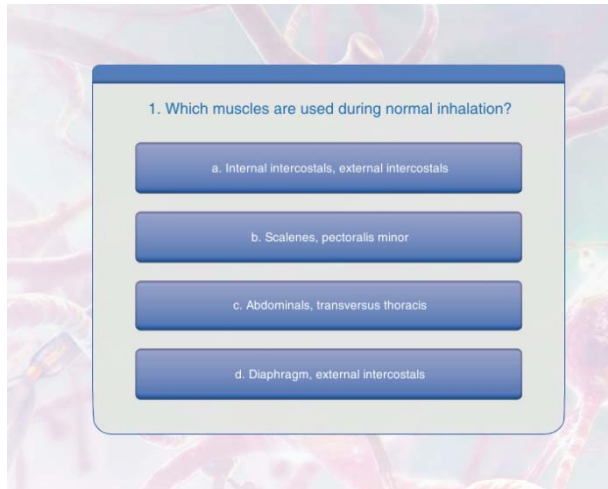


Quiz





Example Video



Quiz Record

Respiratory

- 35.a Upper Respiratory System Multiple Choice
- 35.b Upper Respiratory System Dissection
- 36.a Lower Respiratory System Multiple Choice
- 36.b Lower Respiratory System Dissection
- 37.a Respiration Multiple Choice
- 37.b Respiration Dissection

Digestive

- 39.a Oral Cavity Multiple Choice
- 39.b Oral Cavity Dissection
- 40.a Esophagus and Stomach Multiple Choice

Respiratory System Review Checklist

- ☐ **Locate and identify** the vessels of pulmonary circulation. **36.13**

37. Respiration

- ☐ **Explain** how Boyle's Law relates to breathing. **37.1**
- ☐ **Describe** pulmonary ventilation and **identify** the structures involved. **37.2**
- ☐ **Locate and identify** the muscles used during normal and forced inhalation. **37.3**
- ☐ **Locate and identify** the muscles used during normal and forced exhalation. **37.4**
- ☐ **Explain** how the respiratory and circulatory systems work together during external respiration. **37.5**
- ☐ **Describe** external respiration and **identify** the structures involved. **37.6**
- ☐ **Using Dalton's Law, explain** why oxygen and carbon dioxide are exchanged between the lungs and the bloodstream. **37.7**
- ☐ **Describe** internal respiration and **identify** the structures involved. **37.8 37.9**
- ☐ **Explain** how imbalances of oxygen and carbon dioxide in the bloodstream affect respiratory rate. **37.10**
- ☐ **Locate and identify** the nervous system structures that regulate respiration. **37.11**

Navigation Bar:

- 34. Introduction
- 35. Upper Respiratory System
- 36. Lower Respiratory System
- 37. Respiration**
- Review Checklist

Thumbnail Navigation:

- 34. Introduction
- 37.5 External Respiration
- 37.6 External Respiration Structures
- 37.7 Dalton's Law**
- 37.8 Internal Respiration
- 37.9 Internal Respiration Structures
- 37.10 Breathing Rate and Regulation
- 37.11 Respiratory Regulation
- 37.a Multiple Choice Quiz
- 37.b Dissection Quiz

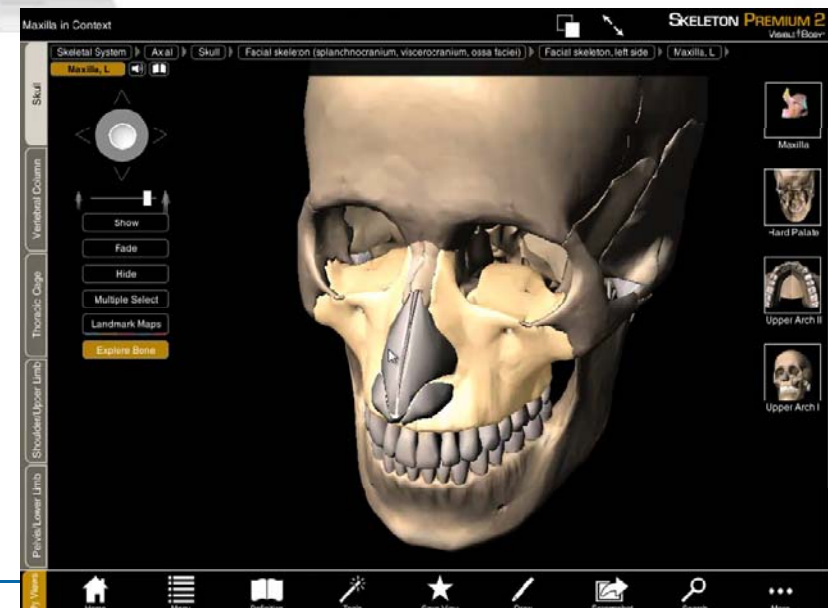


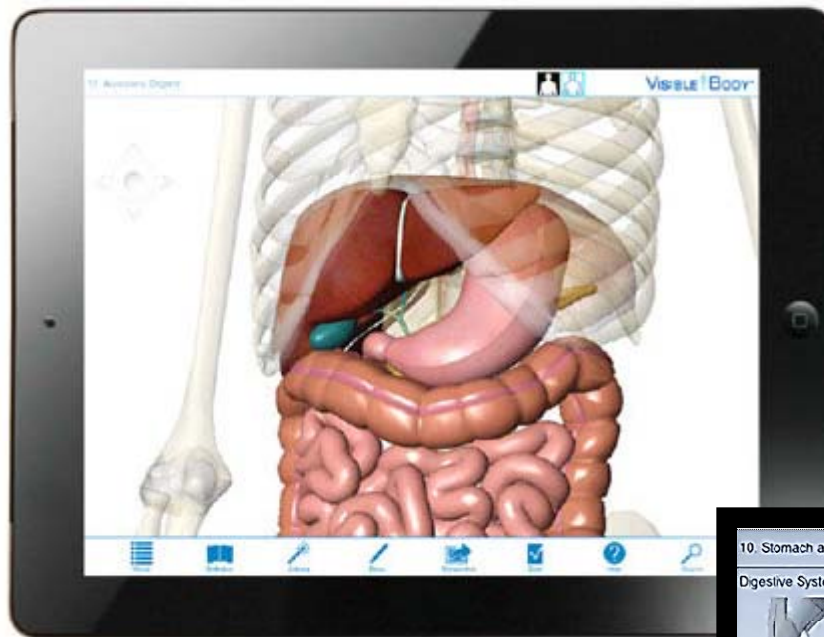
Over 800 bony landmarks
3D models of bone tissue &
synovial joints
Animations & Illustrations
500+ quiz questions

Buy for PC

Buy for Mac

Mac Version

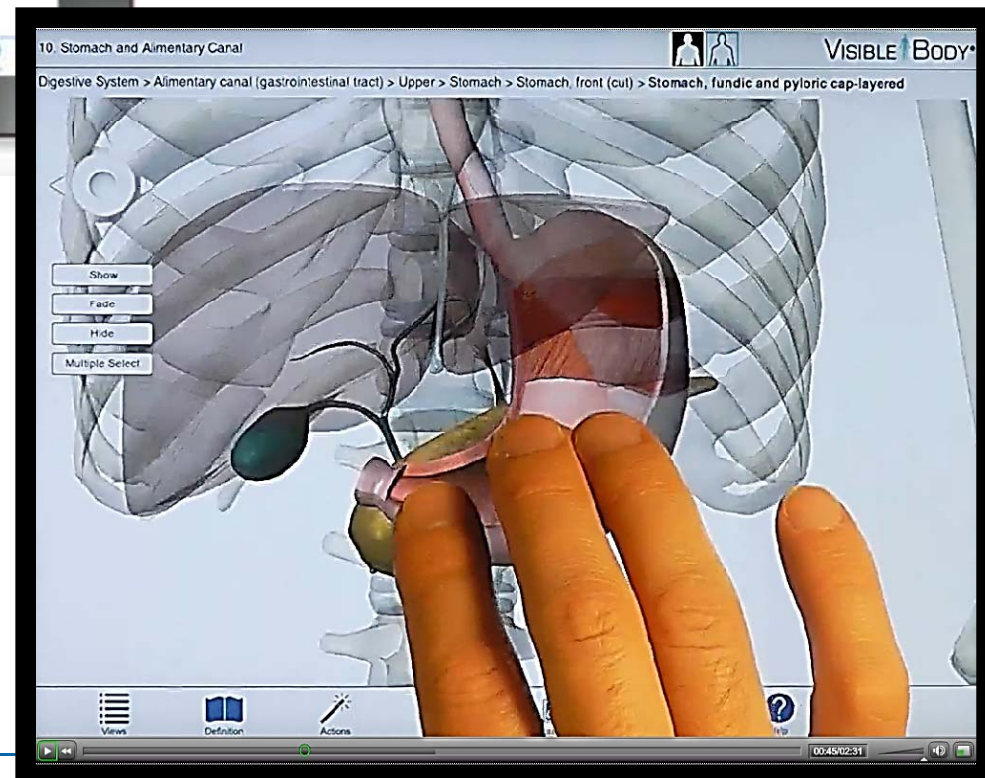


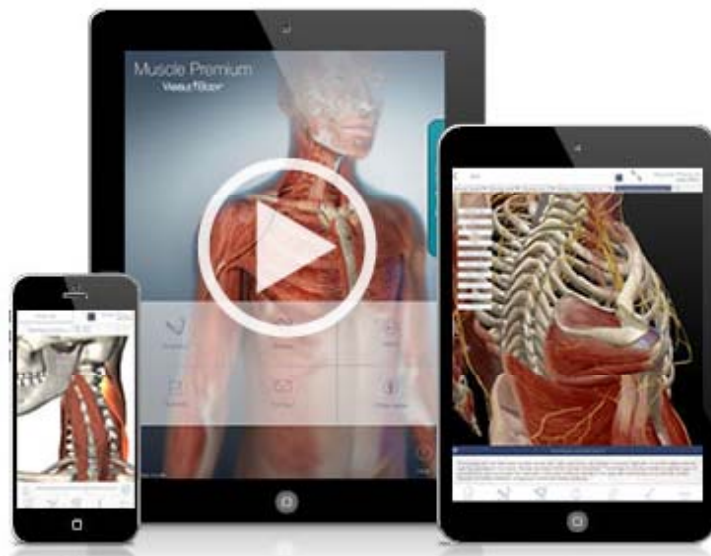


85+ structures
3D functionality
Quiz questions



I Pad Version

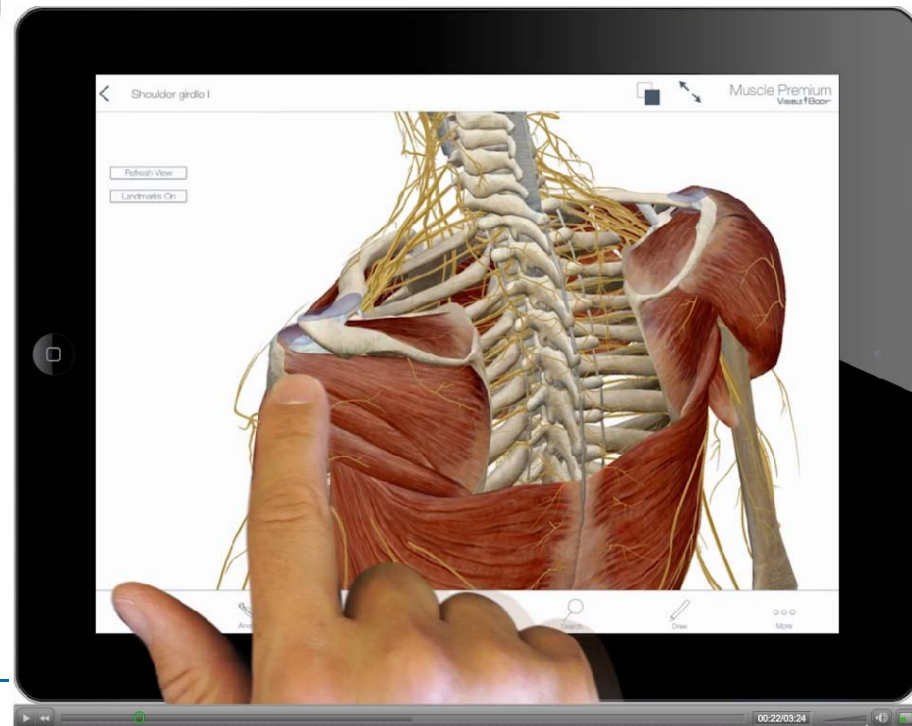




Over 600 muscles
More than 200 bones
2,200 points of attachment
100s of animated muscles
Now with nerves, ligaments and
bursae!



iPhone Version



Thank You



For further
Information

[Visible Body Preview](#)

All categories of product videos listed below are on this page...

[Visible Bodies Preview Page](#)

[Anatomy and Physiology Homepage](#)

[Anatomy and Physiology for PC/Mac](#)

[Anatomy and Physiology for Android](#)

[Anatomy and Physiology for I Pad 7](#)

Human Anatomy

Human Anatomy Atlas 5 for PC and Mac

Human Anatomy Atlas 5 for I Pad

Human Anatomy Atlas 5 for I Phone

Anatomy and Function

Anatomy and Function a visual Reference

Anatomy and Function a visual Reference for I Pad

[Physiology Animations](#)

[Physiology Animations Demo](#)

[Skeleton Premium](#)

[Skeleton Premium for Pc/Mac](#)

[Skeleton Premium for I Pad](#)

[Heart and Circulatory Premium](#)

[Heart and Circulatory Premium 2 PC/Mac](#)

[Heart and Circulatory Premium 2 I Pad](#)

Muscle Premium

Muscle Premium for I Pad/I Phone

Muscle Premium for PC/Mac

Muscle Premium for Android

Brain and Nervous System Anatomy for I Pad

Brain and Nervous System Anatomy for I Pad Demo

Digestive Anatomy for I Pad

Digestive Anatomy for I Pad Demo

Reproductive and Urinary Anatomy for I Pad

Reproductive and Urinary Anatomy for I Pad Demo

Respiratory Anatomy for I Pad

Respiratory Anatomy for I Pad Demo